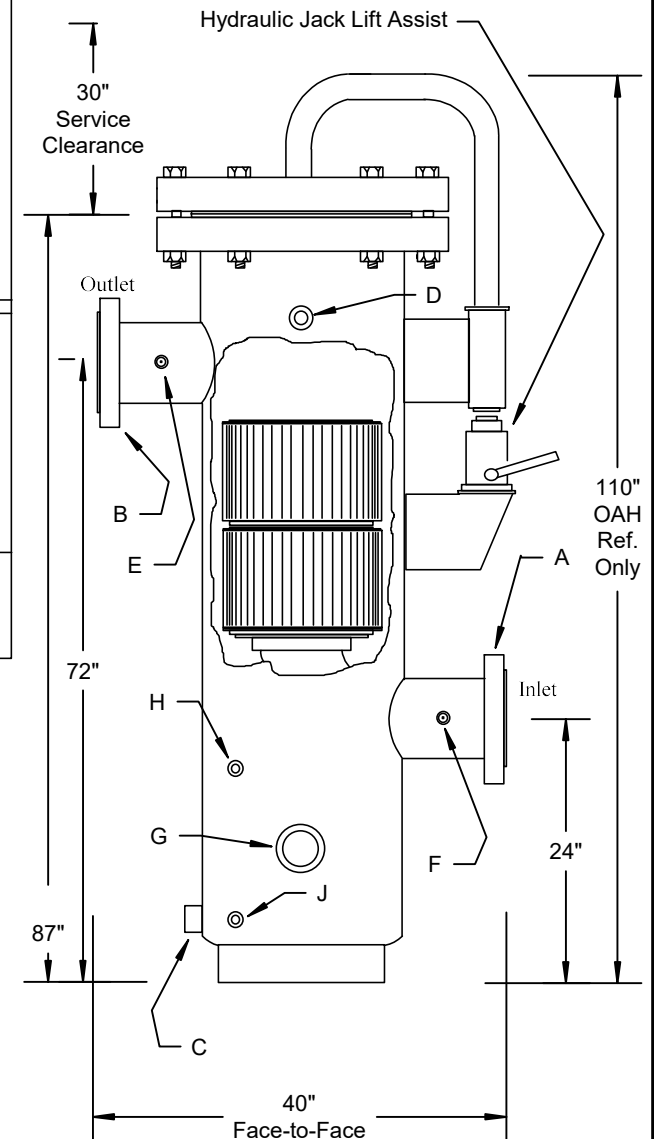
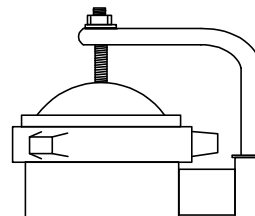


VESSEL DATA SHEET

Design Parameters		Schedule of Openings					
Pressure, Max. at Inlet	1,480 psi	Service	See Dwg.	Qty.	Size	Rating	Type
Temperature	100 F	Inlet	A	1	12"	600# ANSI	Flange
Corrosion Allow.	0.00"	Outlet	B	1	12"	600# ANSI	Flange
Code Standard	ASME Sect. VIII, Div. 1	Drain	C	1	1"	3000#	Coupling
Stamped?	Optional	Vent	D	1	1"	3000#	Coupling
Operating Parameters		Press. Tap	E	1	1/4"	3000#	Coupling
Pressure, Max.	1,480 psi	Press. Tap	F	1	1/4"	3000#	Coupling
Temperature	100 F	Float Switch	G	1	2"	3000#	Coupling
Gas Flow Rate	17.8 MMscfh @ 1,480 psi	Sight Glass	H	1	1/2"	3000#	Coupling
Gas Specific Gravity	0.60	Sight Glass	J	1	1/2"	3000#	Coupling
Vessel Testing		Materials of Construction					
Hydrotest Pressure	2,220 psi	Shell	SA106C			Thickness	
Pneumatic Test Pressure	N/A	Bottom Head	SA516-70			1.219"	
Radiograph	Optional with U-Stamp	In/Out Piping	SA106C			1.250"	
Magnetic Particle	Optional with U-Stamp	Flanges	SA105			0.844"	
Dye Penetrant	Optional with U-Stamp	Couplings	SA105			ANSI 600#	
		Closure Gasket	Spiral Wound Gasket			3000#	
		Ring Base	SA53B			0.188"	
Filtration Performance		Shipping Information					
Filter Element P/N	(2) #2083K907	Total Weight	5,400#				
Type of Filter Media	Borosilicate Fiberglass						
Retention Rating	0.3 micron						
Efficiency of Retention	99.9%						
No. of Elements	1						
Design Clean Press. Drop	0.33 psid						
Changeout Press. Drop	10 psid						
Closure Specifications							
Type	Blind Flange						
Gasket Type	Fiber Type, #24-600SW						
Type of Lifting Assistance	Davit Arm						
Internal Finish							
Sandblast	Light						
Oil Coat	None						
Glyptol Coat	None						
External Finish							
Sandblast	SP-10 Commercial						
Finish Coat	(2) Coats PPG						
	Grey Enamel						
	Primer/Finish						
Sump Capacity	40 gallons						

Optional Threaded Quick Opening Modco Closure

Optional Threaded
Quick Opening
Modco Closure



FilterFab
MANUFACTURING CORPORATION
Model C12-1480F Coalescing Filter